



UV-VIS HPLC Detectors & Supplies

Table of Contents

Table Of Contents / How To Order	2
Who Is Visacon™ / The Visacon™ Advantage	3
HPLC UV/VIS Detectors	4
HPLC Column Test Mixtures	17
HPLC Mobile Phase Inlet Filters	21
HPLC Drain Bottles & Caps	23
HPLC Preparative Fraction Collector	26
How To Order	28



**How can we help
you today?**

Questions:

info@visacon.com

Email Orders:

orders@visacon.com

Fax Orders:

801-226-2885

Website:

www.visacon.com

Mailing Address:

Reflect Scientific Inc.
1266 S. 1380 W.
Orem, UT 84058

About Visacon

About Visacon™

Visacon is the brand of Reflect Scientific's chromatography supplies and instruments. For the very first time Visacon offers you, the front line distributor, our wide range of HPLC (High Performance Liquid Chromatography) instruments and supplies.

In the past we have only offered these products and services to a handful of the largest chromatography instrument companies. This has been done with great success for over 20 years. You have probably purchased our products from one of these well-known companies without knowing it was our product.

With over 40 years of personal experience in OEM Chromatography manufacturing and distribution, we offer a great advantage over other Manufacturing Suppliers. We are your private label Chromatography manufacturer, warehouse and distribution center. Purchasing from us will save you time, money, labor, hassle and an overblown inventory, due to our just in time manufacturing process.

We also offer a full range of customizable chromatography consumables to meet your most exacting specifications. We guarantee that you will be satisfied with your purchase.

The Visacon™ Advantage

Here is what we do for you-

We will private label our products with your name, logo, address, colors, phone number, email address and fax number - on your provided labels or on a label we design for you. You just provide us with the artwork, and if needed we will even help you with that.

We will provide you with this PDF catalog with your name, address, ordering information, logo and part numbers in it.

We will add your part numbers to our manufacturing and computer system and place them on our products for your distribution. Nobody needs to know who we are.

We will place your label on the actual product you purchase from us; not over our label so everyone knows who we are. We will not add additional paperwork in the product with our name on it. If paperwork is required in the product it will have your name on it, not ours. We won't hide our name within the product somewhere, hoping your customer sees the information and orders from us directly.

Integrity and honesty are also a major part of the Visacon Advantage.

UV-VIS HPLC Detectors

- ♦ **VUV-40F** Fixed Wavelength
- ♦ **EUV** Fixed Wavelength – Low Cost Unit
- ♦ **VUV-14 UV-VIS** Fixed Wavelength
- ♦ **VUV-14D UV-VIS** Fixed Wavelength
- ♦ **VUV-24 UV-VIS** Variable Wavelength
- ♦ **OEM & Private Label Models**

VUV-40F Detector

VUV-40F Dual Beam Fixed Wavelength Absorbance Detector

The VUV-40F is a dual beam, fixed wavelength, optical absorbance detector for liquid chromatography. The OEM module can be configured in a variety of ways from standalone operation to incorporation into a dedicated analyzer.

Variety of Light Sources

The VUV-40F can be configured with Hg, LED, Deuterium or Xenon light sources allowing a wide selection of light throughput, wavelength selection, power and sizes to fit any application.

Dual Beam

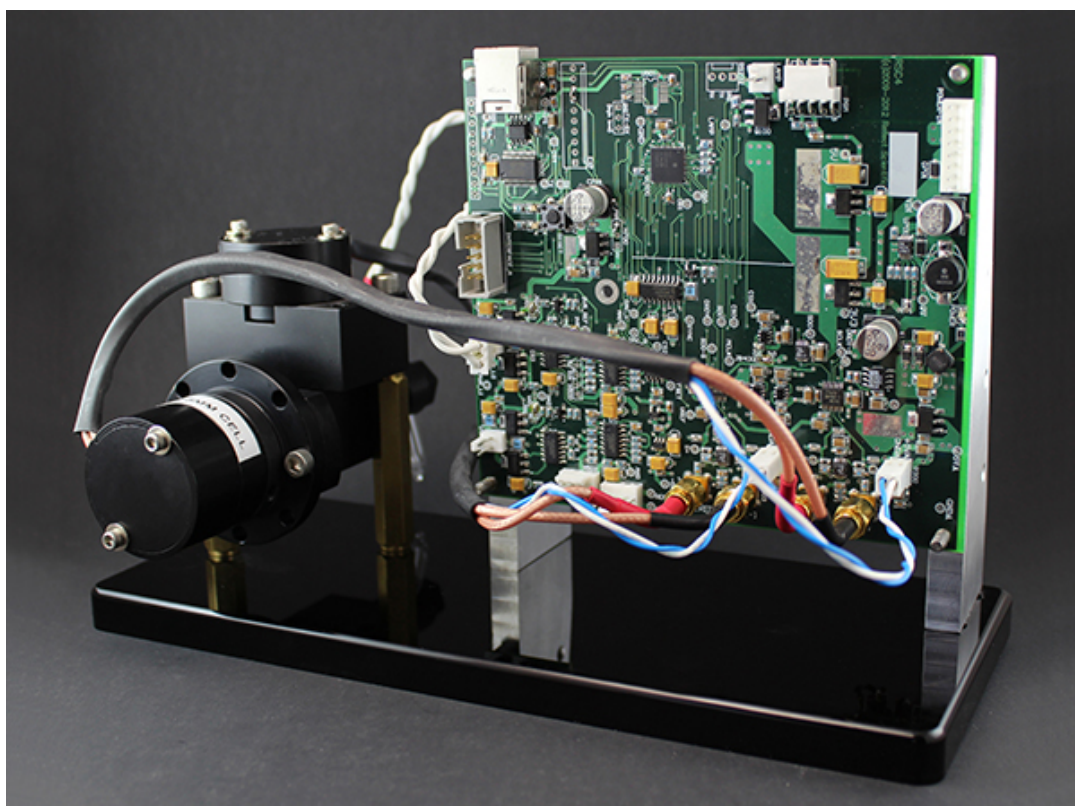
Compact patented design keeps the optical unit small but with the performance of larger instruments. This allows smaller dedicated OEM designs or smaller footprint for stand-alone instruments.

Advanced Electronics

High-resolution output can be accessed by USB or IEEE488 protocols. Fully programmable parameters using a host computer are permanently stored in non-volatile memory. Easily integrated with OEM analytical systems. Stand-alone operation configuration for private label instruments is also available.

Original Equipment Manufacturer

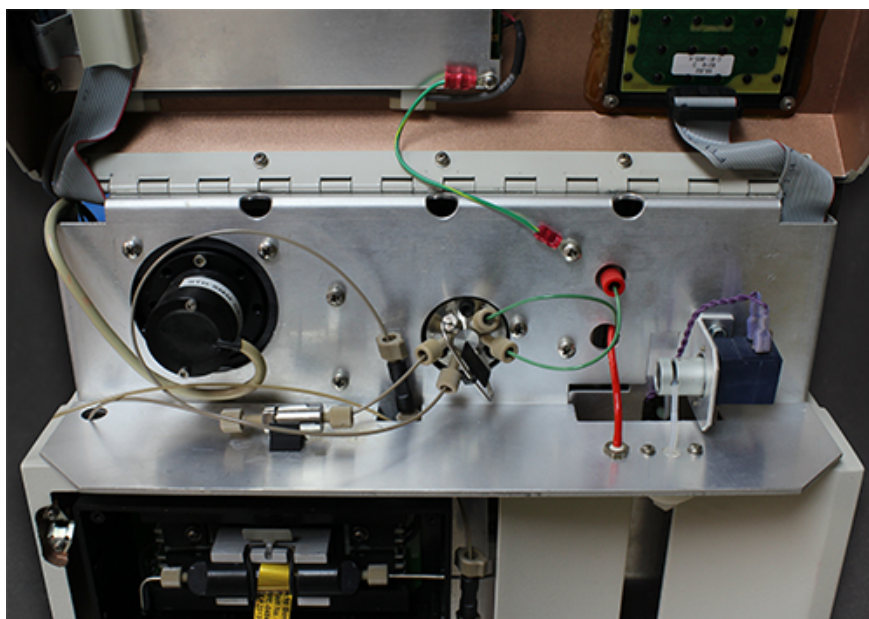
Visacon offers complete units for private label to individual modules designed to fit your specific application. For further information please contact us.



VUV-40F Detector

Specifications:

Light sources	Low pressure mercury lamp 254 nm Deuterium 190 nm – 400 nm LED (discrete wavelengths) Xenon flash 200 nm – 800 nm
Optical design	Double beam (sample/reference)
Wavelength selection	Customer replaceable interference filter (filter not required on LED light source however it is application dependent)
Wavelength accuracy	Defined by elemental line emission characteristics of the lamp
Wavelength precision	Better than +/- 0.2 nm
Band pass	Low pressure mercury lamp <0.1 nm Deuterium/Xenon lamp typically 10.0 nm at half height (dependent on interference filter) LED 5 nm – 40 nm dependent on wavelength
Noise	< +/- 1×10^{-5} AU over 30 sec period peak to peak with 1.0 sec rise time
Drift	< +/- 1×10^{-4} AU over 30 min period peak to peak 1.0 sec rise time
Input/Output	Standard configuration USB I/O Optional 24 bit analog output or IEEE 488 Data rate can be fixed or variable from 80 samples/sec to 30,000 samples/sec.
Cells	5mm, 10mm path length STD cell; 5mm, 10mm path length High flow cell; micro cell, prep cell



VUV-40F installed in medical blood analyzer

EUV Fixed Wavelength Detector

The EUV model is a low cost fixed wavelength light absorbance monitor designed for chromatography. Although it does not have the sensitivity of our VUV-14 analytical unit, it is ideally suited for applications where there is a relatively high absorbance signal or where the amount of sample is not limited. The EUV can be used with a computer or configured as a standalone unit.

Fixed Wavelength

The EUV uses a replaceable low pressure Hg lamp for a wavelength emission of 254nm.

Sampling

Sampling is accomplished using a gasketless flow through chemically inert cell with a path length of 5mm.

Low cost, low maintenance

The EUV utilizes a unique optical design that eliminates expensive optical components but still provides a good detection sensitivity. Total part count has been reduced resulting in a very easy to service, rugged design.

Original Equipment Manufacturer

Visacon offers complete units for private label to individual modules designed to fit your specific application. For further information please contact us.

Specifications:

Light sources	Mercury Lamp 254 nm
Optical design	Interference filter with lamp noise correction
Wavelength selection	Hg lamp: 254 nm with +/- 20 nm band pass filter
Input/Output	USB
Sample Cell	Flow cell with 5mm path length, total dead volume 9 uL (illuminated volume)
Noise	1×10^{-3} AU over 30 sec time period peak to peak at max sensitivity
Detection Limit	10 ppm Benzaldehyde in Methanol



VUV-14 Detector

VUV-14 Fixed Wavelength UV-VIS Absorbance Monitor

High Sensitivity

The VUV-14 is a fixed wavelength light absorbance monitor designed to be used with ultra low volume sampling cells under flowing solvent conditions (i.e. chromatography). The VUV-14 series of detectors has a high resolution analog output with a sensitivity range from 4.0 AU/V to 0.0005 AU/V and features a state-of-the-art noise level of less than ± 0.00001 AU.

Fixed wavelength

The VUV-14 uses a low pressure Hg lamp for a wavelength emission of 254nm.

Variety of sample cell configurations

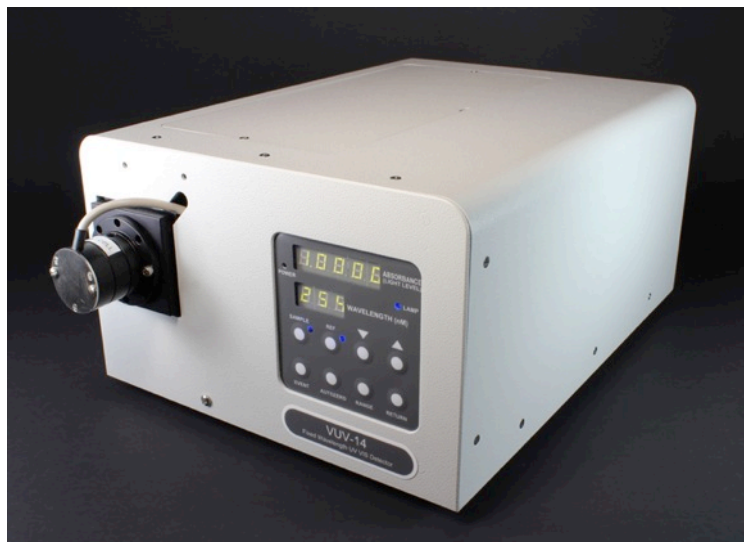
The VUV-14 has a broad line of sample cells available. These include cells designed for on column capillary monitoring, standard and high flow 5 mm and 10 mm path length HPLC cells, and preparative LC. Whatever your application the VUV-14 can serve as a reliable source for obtaining the results you want.

Reliable, Rugged, Low Maintenance Design

The VUV-14 is constructed with a high reliability lamp, true double beam sample/reference light paths and a robust universal power supply. A rugged tactile feedback keypad for instrument control is standard.

Original Equipment Manufacturer

Visacon offers complete units for private label to individual modules designed to fit your specific application. For further information please contact us.



VUV-14 Detector

Specifications:

Light Source(s):	Mercury lamp for 254 nm wavelength
Optical design:	Interference filter with fiber optic beam splitter and high sensitivity/low RI effect flow cell
Wavelength selection:	Hg lamp: 254 nm with +/- 5nm band pass filter
Wavelength accuracy:	Defined by the elemental line emission characteristic of the lamp.
Wavelength precision:	Better than +/- 0.2 nm
Wavelength band-pass:	Typical Hg elemental line emission bandwidth is less than 0.1 nm
Noise and Drift:	< +/- 1 X 10 ⁻⁵ AU (over 30 sec period peak to peak, 1.0 sec rise time); < +/- 1 X 10 ⁻⁴ AU (over 30 min. period peak to peak, 1.0 sec rise time) with STD sample cell at constant temperature
Input/Output connections:	RS-232 computer I/O; auto-injection input (event or run); auto-zero input; one analog integrator or chart recorder output, (voltage range default 1.0 v/AU); selectable analog range outputs of 4.0, 2.0, 1.0, 0.5, 0.2, 0.1, 0.05, 0.01, 0.005, 0.002, 0.001, 0.0005 AU/V with voltage range of +/- 4 V at any scale
Displays:	Absorbance (5 digit LED); wavelength (3 digit LED); analog output range (momentarily from absorbance display by pressing range switch); reference light level; sample light level
Size:	6.6" (height) X 9.4" (width) X 15" ; Approx. 5.5 kg (12 lb. shipping weight)
Sample Cells:	Standard HPLC flow cell with 10 mm path length, total dead volume of 18.0 µL (illuminated volume). Other optional cells: on column capillary cell, micro cell (1.0 µL), 5 mm path length HPLC cell (10 µL volume), high volume preparative cell, high pressure/high volume preparative. Please note all cells can be changed by the user.



VUV-14 Detector

VUV-14 Detector

- High Sensitivity
- Fixed Wavelength (254nm)
- Variety of sample cell configurations
- Reliable, Rugged, Low Maintenance Design
- OEM Models available
- Custom Configurations available



Description	Qty	Part#	Price \$
Fixed wavelength ultraviolet/visible absorbance monitor, with HG Lamp, 254 nm filter with 10 mm STD cell, 18 microliter	1	9014-0001	OEM
Fixed wavelength ultraviolet/visible absorbance monitor, with HG Lamp, 254 nm filter with 5 mm STD cell, 10 microliter	1	9014-0010	OEM
Fixed wavelength ultraviolet/visible absorbance monitor, with HG Lamp 254nm filter with CAP cell for 360 OD capillary, "on-column" monitoring	1	9014-0007	OEM
Fixed wavelength ultraviolet/visible absorbance monitor, with HG Lamp, 254nm filter with PREP-FIX cell, low back pressure 0-3mm, set to 1.0 mm by default at factory	1	9014-0011	OEM
Fixed wavelength ultraviolet/visible absorbance monitor, with HG Lamp, 254 nm filter with MICRO-1000 psi cell, 1.0 microliter, 2 mm path length	1	9014-0013	OEM
Fixed wavelength ultraviolet/visible absorbance monitor, with HG Lamp, 254nm filter with STD-PREP cell, available with 5 mm path length, low back pressure	1	9014-0015	OEM
Fixed wavelength ultraviolet/visible absorbance monitor, with HG Lamp, 254nm filter with STD-PREP cell, available with 10 mm path length, low back pressure	1	9014-0009	OEM

Mercury Lamp

- Replacement Mercury Lamp (254nm)
- For VUV-14 detector



Description	Qty	Part#	Price \$
Mercury Lamp	1 ea.	9100-0002	OEM

Interference Filter

- Replacement Interference Filter (254nm)
- For VUV-14 and VUV-14D detector



Description	Qty	Part#	Price \$
Interference Filter – 254 nm	1 ea.	9150-0254	OEM

VUV-14D Detector

VUV-14D Fixed Wavelength UV-VIS Absorbance Monitor

High Sensitivity

The VUV-14D is a fixed wavelength light absorbance monitor designed to be used with ultra low volume sampling cells under flowing solvent conditions (i.e. chromatography). The VUV-14D series of detectors has a high resolution analog output with a sensitivity range from 4.0 AU/V to 0.0005 AU/V and features a state-of-the-art noise level of less than ± 0.00001 AU.

Flexible Configurations

The VUV-14D uses a deuterium lamp with a working wavelength range from 190 nm to 400 nm. Specific wavelengths are selected by using an interference filter. One 254nm filter is included with each detector. Other wavelengths are available upon request (prices will vary).

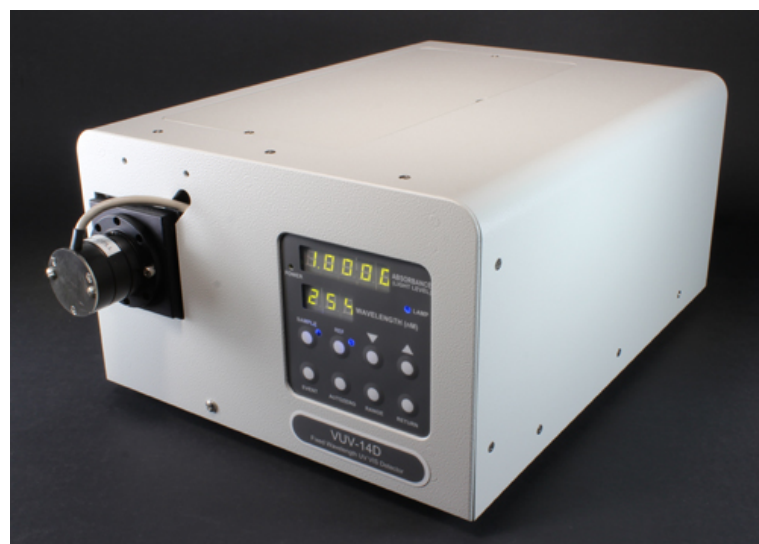
The VUV-14D has a broad line of sample cells available. These include cells designed for on column capillary monitoring, standard and high flow 5 mm and 10 mm path length HPLC cells, and preparative LC. Whatever your application the VUV-14D can serve as a reliable source for obtaining the results you want.

Reliable, Rugged, Low Maintenance Design

The VUV-14D is constructed with a high reliability lamp, true double beam sample/reference light paths and a robust universal power supply. A rugged tactile feedback keypad for instrument control is standard.

Original Equipment Manufacturer

Visacon offers complete units for private label to individual modules designed to fit your specific application. For further information please contact us.



VUV-14D Detector

Specifications:

Light Source(s):	D2 lamp for 190-400 nm wavelengths
Optical design:	Interference filter with fiber optic beam splitter and high sensitivity/low RI effect flowcell.
Wavelength selection:	User changeable bandpass filters
Wavelength accuracy:	Dependent on bandpass filter specifications
Wavelength precision:	Dependent on bandpass filter specifications
Wavelength band-pass:	Dependent on bandpass filter specifications
Noise and Drift:	< +/- 1 X 10 ⁻⁵ AU (over 30 sec period peak to peak, 1.0 sec rise time); < +/- 1 X 10 ⁻⁴ AU (over 30 min. period peak to peak, 1.0 sec rise time) with STD sample cell at constant temperature
Input/Output connections:	RS-232 computer I/O; auto-injection input (event or run); auto-zero input; one analog integrator or chart recorder output, (voltage range default 1.0 v/AU); selectable analog range outputs of 4.0, 2.0, 1.0, 0.5, 0.2, 0.1, 0.05, 0.01, 0.005, 0.002, 0.001, 0.0005 AU/V with voltage range of +/- 4 V at any scale
Displays:	Absorbance (5 digit LED); wavelength (3 digit LED); analog output range (momentarily from absorbance display by pressing range switch); reference light level; sample light level
Size:	6.6" (height) X 9.4" (width) X 15" ; Approx. 5.5 kg (12 lb. shipping weight)
Sample Cells:	Standard HPLC flow cell with 10 mm pathlength, total dead volume of 18.0 µL (illuminated volume); other optional cells: on column capillary cell, micro cell (1.0 µL), 5 mm path length HPLC cell (10 µL volume), high volume preparative cell, high pressure/high volume preparative. Please note all cells can be changed by the user.



VUV-14D Detector

VUV-14D Fixed Wavelength UV-VIS Absorbance Monitor

- High Sensitivity
- Flexible Configurations
- Reliable, Rugged, Low Maintenance Design
- OEM Models available
- Custom Configurations available



Description	Qty	Part#	Price \$
Fixed wavelength ultraviolet/visible absorbance monitor, with D2 Lamp, 10 mm STD cell, 18 microliter	1	9014-2001	OEM
Fixed wavelength ultraviolet/visible absorbance monitor, with D2 Lamp, 5 mm STD cell, 10 microliter	1	9014-2010	OEM
Fixed wavelength ultraviolet/visible absorbance monitor, with D2 Lamp, CAP cell for 360 OD capillary, "on-column" monitoring	1	9014-2007	OEM
Fixed wavelength ultraviolet/visible absorbance monitor, with D2 Lamp, PREP-FIX cell, low back pressure 0-3mm, set to 1.0 mm by default at factory	1	9014-2011	OEM
Fixed wavelength ultraviolet/visible absorbance monitor, with D2 Lamp, MICRO-1000 cell, 1.0 microliter, 2 mm pathlength	1	9014-2013	OEM
Fixed wavelength ultraviolet/visible absorbance monitor, with D2 Lamp, with STD-PREP cell, available with 5 mm pathlength, low backpressure	1	9014-0015	OEM
Fixed wavelength ultraviolet/visible absorbance monitor, with D2 Lamp, with STD-PREP cell, available with 10 mm pathlength, low backpressure	1	9014-2009	OEM

D2 Deuterium Lamp

- Long life
- Low noise Deuterium Replacement Lamp
- For VUV-24 and VUV-14D detectors



Description	Qty	Part#	Price \$
D2 Deuterium Lamp	1 ea.	9100-0001	OEM

Interference Filter

- Replacement Interference Filter (254nm)
- For VUV-14 and VUV-14D detector
- Other wavelengths available upon request



Description	Qty	Part#	Price \$
Interference Filter – 254 nm	1 ea.	9150-0254	OEM

* Price varies with monitoring wavelength selected. Not all wavelengths available. Call for availability of bandpass filters.

VUV-24 Detector

VUV-24 Variable Wavelength UV-VIS Absorbance Monitor

High Sensitivity

The VUV-24 is a variable wavelength light absorbance monitor designed to be used with ultra low volume sampling cells under flowing solvent conditions (i.e. chromatography). The VUV-24 series of detectors has a high resolution analog output with a sensitivity range from 4.0 AU/V to 0.0005 AU/V and feature a state-of-the-art noise level of less than ± 0.00001 AU.

Flexible Configurations

The VUV-24 can be configured to use a deuterium lamp with a working wavelength range from 190 nm to 400 nm. Specific wavelengths are selected by using the front panel or RS232 instrument control.

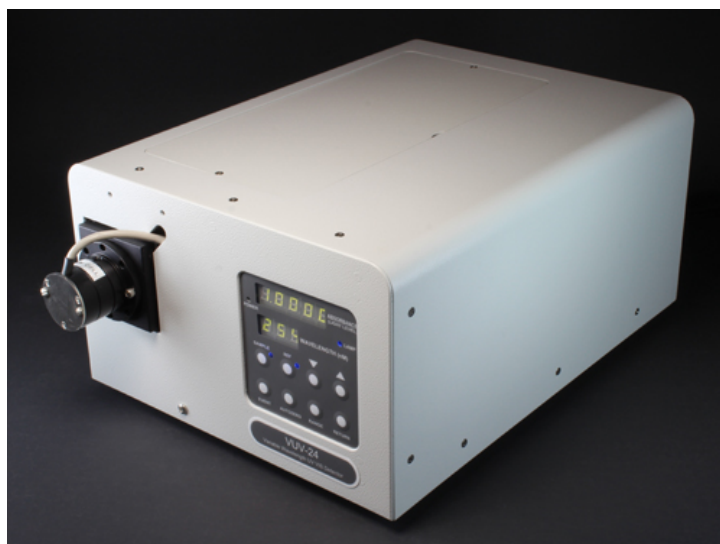
The VUV-24 has a broad line of sample cells available. These include cells designed for on column capillary monitoring, standard and high flow 5 mm and 10 mm path length HPLC cells, and preparative LC. Whatever your application, the VUV-24 can serve as a reliable source for obtaining the results you want.

Reliable, Rugged, Low Maintenance Design

The VUV-24 is constructed with a high reliability lamp, true double beam sample/reference light paths and a robust universal power supply. A rugged tactile feedback keypad for instrument control is standard.

Original Equipment Manufacturer

Visacon offers complete units for private label to individual modules designed to fit your specific application. For further information please contact us.



VUV-24 Detector

Specifications:

Light Source(s):	Deuterium lamp, typical lifetime of >2000 hours, easily changed, prealigned
Optical design:	Prism monochromator (patented) with dual beam silicon photodiodes: wavelength selection from 190 to 400 nm, one wavelength selection is output to the serial interface and the high resolution analog output
Wavelength selection:	190 nm to 400 nm in increments of 1 nm; user selected from front panel via push button input or selected from computer via RS-232 input/output
Wavelength accuracy:	Better than +/- 2 nm range
Wavelength precision:	Better than +/- 0.2 nm
Wavelength band-pass:	<8.0 nm (typical) at half-height at 250 nm
Noise and Drift:	< +/- 1 X 10 ⁻⁵ AU (over 30 sec period peak to peak, 1.0 sec rise time); < +/- 1 X 10 ⁻⁴ AU (over 30 min. period peak to peak, 1.0 sec rise time) with STD sample cell at constant temperature
Input/Output connections:	RS-232 computer I/O; auto-injection input (event or run); auto-zero input; one analog integrator or chart recorder output, (voltage range default 1.0 V/AU); selectable analog range outputs of 4.0, 2.0, 1.0, 0.5, 0.2, 0.1, 0.05, 0.01, 0.005, 0.002, 0.001, 0.0005 AU/V with voltage range of +/- 4 V at any scale
Displays:	Absorbance (5 digit LED); wavelength (3 digit LED); analog output range (momentarily from absorbance display by pressing range switch); reference light level; sample light level
Size:	6.6" (height) X 9.4" (width) X 15" ; Approx. 7.3 kg (16 lb. shipping weight)
Sample cells:	Standard HPLC flow cell with 10 mm path length, total dead volume of 18.0 µL (illuminated volume). Other optional cells: on column capillary cell, micro cell (1.0 µL), 5 mm path length HPLC cell (10 µL volume), high volume preparative cell, high pressure/high volume preparative, cuvette holder. Please note all cells can be changed by the user. Other cells are available; not all are listed.



VUV-24 Detector

VUV-24 Variable Wavelength UV-VIS Absorbance Monitor

- High Sensitivity
- Flexible Configurations
- Reliable, Rugged, Low Maintenance Design



Description	Qty	Part#	Price \$
Variable wavelength ultraviolet/visible absorbance monitor detector with D2 lamp, single wavelength monitoring, 10 mm STD cell, 18 microliter	1	9024-0001	OEM
Variable wavelength ultraviolet/visible absorbance monitor detector with D2 lamp, single wavelength monitoring, CAP cell, for 365 OD micron capillary with ID from 25 to 300 microns	1	9024-0007	OEM
Variable wavelength ultraviolet/visible absorbance monitor detector with D2 lamp, single wavelength monitoring, 10mm STD-PREP cell, low back pressure, high sensitivity	1	9024-0009	OEM
Variable wavelength ultraviolet/visible absorbance monitor detector with D2 lamp, single wavelength monitoring, 5 mm STD cell, 10 microliter, low RI effect	1	9024-0010	OEM
Variable wavelength ultraviolet/visible absorbance monitor detector with D2 lamp, single wavelength monitoring, PREP-FIX cell, 0 to 3 mm path length, set to 1.0 mm if not specified, very low back pressure	1	9024-0011	OEM
Variable wavelength ultraviolet/visible absorbance monitor detector with D2 lamp, single wavelength monitoring, MICRO-1000 psi cell, 2 mm path length, 1 microliter volume	1	9024-0013	OEM

D2 Deuterium Lamp

- Long life
- Low noise Deuterium Replacement Lamp
- For VUV-24 and VUV-14D detectors



Description	Qty	Part#	Price \$
D2 Deuterium Lamp	1 ea.	9100-0001	OEM

Custom products & bulk pricing available. Email or fax us with your specifications for more information.

HPLC Column Test Mixtures

HPLC Column Test Mixtures

Test mixes enable you to troubleshoot chromatographic problems, optimize system efficiency, and evaluate columns under conditions where their performance is understood. We ship these test mixtures in amber ampules to prevent photo degradation.

LC Test Mix

Concentration:

in Methanol: Water (70:30)

Toluene - 100 ppm

Tartazine - 6 ppm

Anthracene - 5 ppm

Acetophenone - 2 ppm



Description	Qty	Part#	Price \$
LC Test Mix Ampule, 1ml	1/pk	A3469-020	OEM
	5/pk	A3469-010	

FL Test Mix

Concentration:

in Acetonitrile: Methanol (2:98)

Anthracene - <.001



Description	Qty	Part#	Price \$
FL Test Mix Ampule, 1ml	1/pk	A3469-030-1	OEM
	5/pk	A3469-030	

LOW RI Test Mix

Concentration:

in Glycerol: Water (69.2:30.8)



Description	Qty	Part#	Price \$
LOW RI Test Mix Ampule, 1ml	1/pk	A3469-060	OEM
	5/pk	A3469-050	

HI RI Test Mix

Concentration:
in Isopropanol: Water (83.2:16.8)



Description	Qty	Part#	Price \$
HI RI Test Mix Ampule, 1ml	1/pk	A3469-070-1	OEM
	5/pk	A3469-070	

Autosampler Test Mix

Concentration:
in Toluene: Methanol (0.5:99.5)



Description	Qty	Part#	Price \$
Autosampler Test Mix Ampule, 1ml	1/pk	A4991-010-1	OEM
	5/pk	A4991-010	

Autosampler Dilution Test Mix

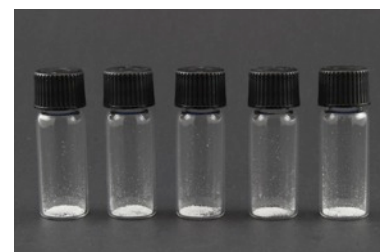
Concentration:
in Toluene: Methanol (50:50)



Description	Qty	Part#	Price \$
Autosampler Dilution Test Mix Ampule, 1ml	1/pk	A5135-010-1	OEM
	5/pk	A5135-010	

Pump Test Mix

Concentration:
100% Methyl Paraben (Powder)



Description	Qty	Part#	Price \$
Pump Test Mix, 1ml	1/pk	A4904-010-1	OEM
	5/pk	A4904-010	

UV Linearity Detector Test Kit

Concentration:

Ethyl Paraben in Methanol 99.99%

Ethyl Paraben - 28 ppm

Ethyl Paraben - 14 ppm

Ethyl Paraben - 7 ppm

* Includes Certificate of Analysis



Description	Qty	Part#	Price \$
UV Linearity Detector Test Kit Ampule, 10ml (Includes one of each concentration)	3/pk	A5113-010	OEM

UV Linearity Detector Test Kit

Concentration:

Ethyl Paraben in Methanol 99.99%

Ethyl Paraben - 22.4 ppm

Ethyl Paraben - 11.2 ppm

Ethyl Paraben - 5.6 ppm

* Includes Certificate of Analysis



Description	Qty	Part#	Price \$
UV Linearity Detector Test Kit Ampule, 10ml (Includes one of each concentration)	3/pk	A5113-020	OEM

Custom products & bulk pricing available. Email or fax us with your specifications for more information.

HPLC Mobile Phase Inlet Filters

- ♦ Fits all HPLC systems

Teflon Inlet Filter

- Flat Bottom Design Draws All the Solvent From the Reservoir
- Teflon Housing w/Teflon Filter
- Keep Particulates Out of Your Pump
- Draws 98% of Mobile Phase without Drawing Air into the System
- Prolong Equipment Life
- No tools or fittings needed
- High Surface Area For Long Life
- Slip On Design or Screw On Design
- 10µm Porosity



Description	Qty	Part#	Price \$
Solvent Inlet Filter Teflon , w/PEEK threaded for 1/8" O.D. Teflon Tubing	1/pk 5/pk	A4258-010 A4258-010-5	OEM
Solvent Inlet Filter Teflon , w/PEEK barbed stem for 1/16" I.D. Teflon Tubing	1/pk 5/pk	A4258-020 A4258-020-5	OEM
Replacement Teflon Filter Discs to Fit A4258 Filter Housing	5/Pk	A4258-010RD	OEM

316 Stainless Steel Inlet Filter

- Keep Particulates Out of Your Pump
- Prolong Equipment Life
- Cylindrical Design Maximizes Filter Life
- Slip On Design or Screw On Design
- No tools or fittings needed
- 10µm Porosity
- Passivated Stainless Steel



Description	Qty	Part#	Price \$
Solvent Inlet Filter SS, 3/8" O. D., w/PEEK threaded for 1/8" O.D. Teflon Tubing	1/pk 5/pk	A4929-010 A4929-010-5	OEM
Solvent Inlet Filter SS, 3/8" O. D. , w/PEEK barbed stem for 1/16" I.D. Teflon Tubing	1/pk 5/pk	A4929-020 A4929-020-5	OEM
Small 1/4" O. D. Solvent Inlet Filter SS , w/threaded SS to fit 1/8" O.D. Teflon Tubing- Can be used as filter or Sparger	1/pk 5/pk	A0369-010 A0369-010-5	OEM

Custom products & bulk pricing available. Email or fax us with your specifications for more information.

HPLC Drain Bottles & Caps

HPLC Drain Bottles

HPLC drain bottles are used as a collection chamber for effluent waste from scientific instruments which use various solvents. These bottles are made of glass or high density polyethylene allowing for collection of most solvents. After collecting the solvents, the bottles may be easily transported to larger waste disposal containers within your lab or facility.

1000ml Graduated Lab Bottle

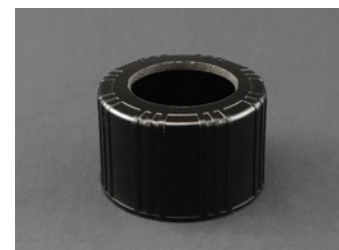
- Large white writing area
- Borosilicate glass
- 38-430 thread
- Optional – Black phenolic screw cap



Description	Qty	Part#	Price \$
1000ml Graduated Lab Bottle (includes Cap w/ Hole)	12/pk	1413-0430WCH	OEM
1000ml Graduated Lab Bottle (No Cap)	12/pk	1413-0430	OEM

Black Phenolic Screw Cap for 1000ml Bottle

- 1" Through hole for tubing
- Fits 1000ml graduated lab bottle
- Fits all bottles with 38-430 thread



Description	Qty	Part#	Price \$
Black Phenolic Screw Cap, 38-430 Thread with 1" Through Hole For Tubing	12/pk	DY50305500	OEM

250ml HDPE Wide Mouth Drain Bottle w/ Stainless Steel Bulkhead

- High Density Polyethylene (HDPE)
- One 316 Stainless Steel 1/16" Bulkhead Union Installed Into Cap (Union Accepts .0625" O. D. Tubing)
- 43mm Polypropylene Cap



Description	Qty	Part#	Price \$
250ml High Density Polyethylene Wide Mouth Drain Bottle w/ Cap & SS Fitting	6/pk	FM102771	OEM
Replacement 43mm Cap w/ One 316 SS 1/16" Bulkhead Union	6/pk	FM102771CAP	OEM

HPLC Drain Bottles

2000ml High Density Polyethylene Wide Mouth Drain Bottle

- High Density Polyethylene (HDPE)
- Two Bulkhead Barbed Nylon Fittings 1/2" I.D. Installed into Polypropylene 100mm Cap



Description	Qty	Part#	Price \$
2000ml High Density Polyethylene Wide Mouth Drain Bottle w/ Cap & Fittings	6/pk	393726501	OEM
Replacement 100mm Cap w/ Two Bulkhead Barbed Fittings (1/2" I.D.)	6/pk	393726501CAP	OEM

4000ml High Density Polyethylene Wide Mouth Drain Bottle

- High Density Polyethylene (HDPE)
- Two Bulkhead Barbed Nylon Fittings 1/2" I.D. Installed into Polypropylene 100mm Cap



Description	Qty	Part#	Price \$
4000ml High Density Polyethylene Wide Mouth Drain Bottle w/ Cap & Fittings	6/pk	FM103894	OEM
Replacement 100mm Cap w/ Two Bulkhead Barbed Fittings (1/2" I.D.)	6/pk	FM103894CAP	OEM

Custom products & bulk pricing available. Email or fax us with your specifications for more information.

HPLC Preparative Fraction Collector

Preparative Fraction Collector

SP-100 Preparative Fraction Collector

Preparative scale fraction collector for liquid chromatography. Full X-Y-Z axis control with holding reservoir.

Versatile. The Visacon SP-100 fraction collector can be used for preparative to pilot production scale liquid chromatographic separations. The fully programmable X-Y-Z axis system accommodates a wide range of collection containers (40 - 1L Boston round shown). Holding reservoir allows drip-free fraction delivery. Control is accomplished through the use of a laptop or integration into an existing separation system.

We can also build a complete system that includes an SSI pump and Visacon detector. Just add your prep column. Contact us to discuss your preparative needs.



Description	Qty	Part No.	Price \$
Preparative Fraction Collector w/ X-Y-Z Axis Controller & Holding Reservoir	1	SP-100	OEM

Custom products & bulk pricing available. Email or fax us with your specifications for more information.

How to Order

Email Orders:

orders@visacon.com

Questions:

info@visacon.com

Mailing Address:

Reflect Scientific Inc.
1266 S. 1380 W.
Orem, UT 84058

Fax Orders:

801-226-2885

Website:

www.visacon.com

Telephone:

801-226-4100

USA Payments:

We accept Visa and MasterCard. Please provide credit card number, expiration date, name on card, billing address and CID number.

To Establish A USA Account:

Please send us four credit references. We can ship your orders via Net 30 Days once your references have been verified.

International Payments:

Special payment terms apply to International Customers. Please Inquire.

Order Details:

Please include the following information when you place an order:

Your Name
Phone Number
Fax Number
Email Address
Billing Address
Detailed Shipping Address
Purchase Order Number
Part Number and Quantity For Each Item Ordered
Special Shipping Instructions If Applicable

Prices:

All Prices Are FOB/EXW Orem, Utah USA

Minimum Orders:

Minimum order quantities may apply